

EMSHOCK USER GUIDE



Warning

Dear user:

Thanks for using our company's products, in order to fully make use of the products, we sincerely suggest follow:

Please read the instruction in detail and keep it well for further reading and consulting.

- ◆◆ Please follow the instruction to fit and operate the machine correctly.
- ◆◆ Please do not remove and change any accessories of the machine.
- ◆◆ It forbids others to open and remove the mainframe except the authorized people in the company.
- ◆◆ It forbids others to change and maintain the machine except the professional people.
- ◆◆ Please contact us if there is any trouble during operation.

This product does not belong to medical, please don't use for disease treatment !

Advantage

1. By the targeted application of the shockwaves, stress to the surrounding tissues is quite insignificant
2. The body not burdened by pharmaceuticals, except the short-term effect of local anesthesia if used
3. Pain Treatment Rehabilitation physiotherapy
4. Muscle growth strength training post-exercise recovery
5. Decrease abdominal and body fat

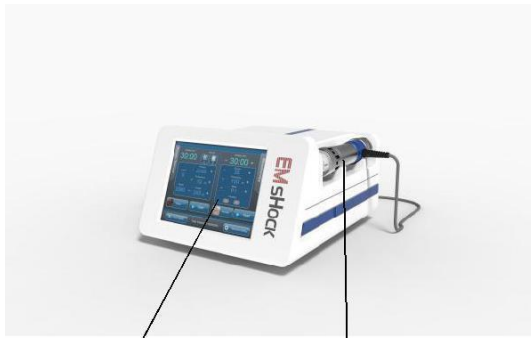
General Introduction

The EMSHOCK upgraded from electromagnetic shock wave. With additional Electric muscle stimulation technology make EMSHOCK a better physiotherapy device.

EMS: “Electrical Muscle Stimulation” is an internationally accepted and proven way of treating muscular injuries. It works by sending electronic pulses to the muscle needing treatment; this causes the muscle to exercise passively. When the muscle receives this signal, it contracts as if the brain has sent the signal itself. As the signal strength increases, the muscle flexes as in physical exercise. Then when the pulse ceases, the muscle relaxes and the cycle starts over again, (Stimulation, Contraction and Relaxation.)

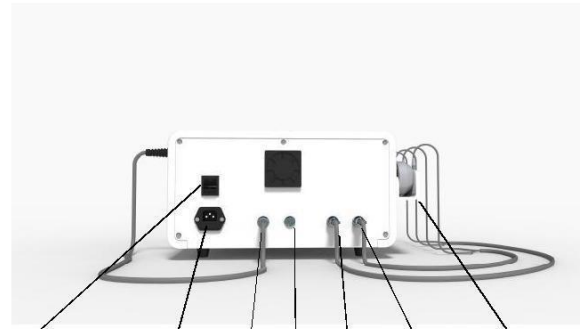
Shock wave: A shock wave is defined as a wave with a rapid increase of increase of pressure within a very short time and then having a gradual decrease of pressure with a small negative pressure phase. Shock wave is aimed at the affected area that are the source of chronic pain, the influence of the shock waves causes to the dissolution of calcium deposits and leads to better vascularization. The after-effect is relief from the pain.

Parts Introduction



1

2



3

4

5

6

7

8

9

1. Display
2. Shock wave handle supporter
3. Power switch
4. Power socket
5. Shock wave handle connector
6. Pedal switch connector
7. EMS A connector
8. EMS B connector
9. Self vacuum cup supporter

Accessories



Shockwave handle



1# ~ 5# tips



Self vacuum cup

Basic operation

- 1.All accessories well connected.
- 2.insert the plug of power supply line into (4) socket turn on general power switch (3), and need to input password “888888” (**Fig1**), the system enter interface as (**Fig 2**) shows.

3.In interface as (**Fig 2**)


- (1)Click on “Basic setting” to select language , set time and date.

NOTICE: Advanced setting is only for engineering debugging, not for user.

- (2) This system shows Shock Wave and EMS can work at the same time.

(3) Channel left: ESWT shows shock wave parameter (**Fig3**)

The system default body part is **Hand/wrist**

- Please click  to choose the body part that you want (**Fig4**) The system shows 10 different body for you to chose

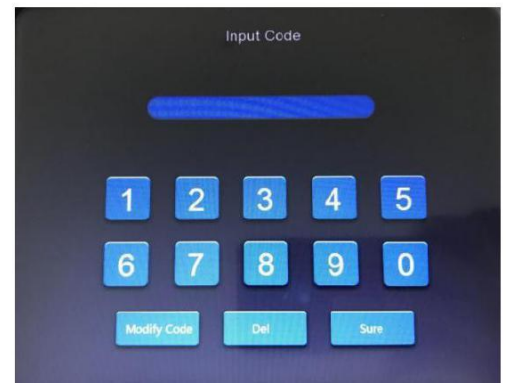


Fig 1



Fig 2



The system default preload “2500” The preload rang 500 to 3500 Please adjust by “-” and “+”



The Frequency rag 1 to 16HZ, please adjust by “-” and “+”



The Energy rag 5 to 200MJ, please adjust by “-” and “+”




Fig 3



Fig 4

(5) On channel right: EMS shows EMS parameter (**Fig 5**)

The system default body part is **Cervical Vertebra**

Please check  to choose the body part that

you want (**Fig 6**) The system shows 10 different body for you to chose



Fig 6

Shock wave Operation

User's manual use "Hand/wrist" treatment for example. In interface as (**Fig 2**),

- (1).Apply gel to the treated body parts;
- (2). Click on "Hand/wrist" to enter the treatment screen;
- (3). Install the recommended tip on the handle;
- (4) "Preload 2500" stands for when the system works to 2500 impacts every time, it will pause automatically. Please click on any place of the screen to restart.
- (5) "Impact" represents the number of shocks;
- (6) "Round" represents the number of rounds completed; (2500 impacts are one round)
- (7) "Frequency 10HZ" stands for the system default work frequency is 10HZ, click on "-" and "+" to adjust. The range is :1HZ-16HZ
- (11). "Energy 50MJ" stands for the system default work frequency is 50MJ, click on "-" and "+" to adjust. The range is 50MJ-200HJ.

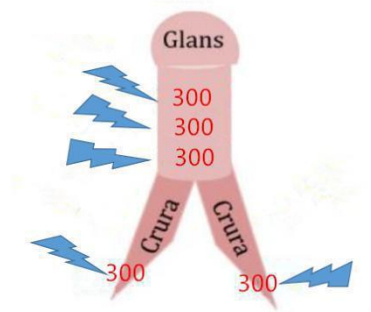
When the frequency is 1Hz to 13HZ, the energy is 50-200MJ; When the frequency is 14Hz, the energy is 50-150MJ;

When the frequency is 15HZ, the energy is 50-130MJ; When the frequency is 16HZ, the energy is 50-100.



ED therapy protocol

1. Treatment Programs



- (1) Target to spongy tissue in 5 different areas
- (2) 300 impacts per area, total 1500 impacts in one treatment
- (3) Twice a week, treat consistently for 3 weeks, then stop for 3 weeks.
And start next course.
- (4) Should be more impacts at the top end of penis, and Less impacts at the bottom of penis.

2. ED parameter selection

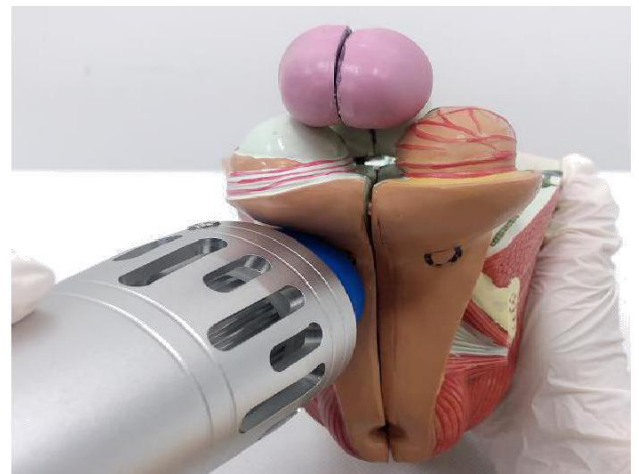
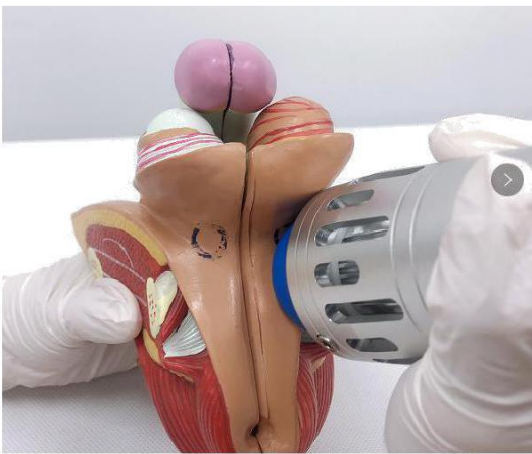
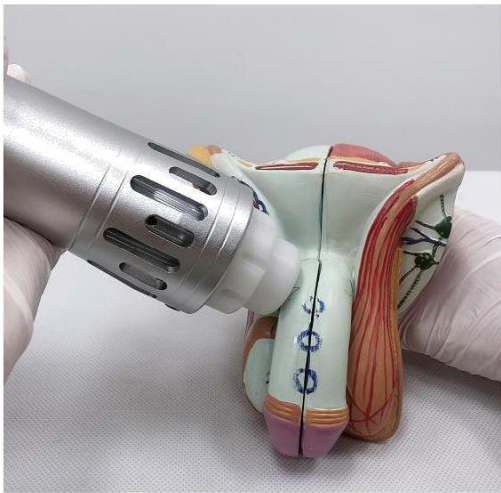
The frequency of ED treatment is 1-10HZ. The recommended frequency is 3-8HZ.

The energy of ED is 5 10 15 20 25 30 40 50MJ, please adjust the energy according to the customer's feeling from low to high during operation.

3. Operation guide

- (1) Choose the 2# exclusive ED treatment work head, Along the 5 areas of the spongy tissue, 300 impacts per area, total 1500 impacts in one round, about 20 minutes.
- (2) 5# head for prostate





Following are two automatic mode parameter tables for different body parts

Application Treatment Recommendation				
Area	Energy/Frequency	Time	Sessions	Interval
Elbow	3HZ/50MJ	2500	5-10	5-7days
Hand/Wrist	1HZ/50MJ	2500	5-10	5-7days
Pubic Symphysis	4HZ/80MJ	2500	5-10	5-7days
Knee	3HZ/50MJ	2500	5-10	5-7days
Foot/Ankle	3HZ/50MJ	2500	5-10	5-7days
Shoulder	8HZ/100MJ	2500	5-10	5-7days
Lumbar Region	9HZ/130MJ	2500	5-10	5-7days
Fat accumulate	11HZ/150MJ	2500	5-10	5-7days
Hip	11HZ/150MJ	2500	5-10	5-7days
ED	3HZ/5MJ	1500	2-3	twice a week

PS: This program is only for reference. Please follow the doctor's advice.

EMS Operation

User's manual use "Cervical Vertebra" treatment for example.

In interface as (Fig 2),

- (1).Apply gel to the treated body parts;
- (2). Click on "Cervical Vertebra" to enter the treatment screen;
- (3) Possible to treat 2 people simultaneously and 8 sick-parts at most
- (4) Possible to choose various program and wide frequency which are Tapping,
- (5) "Frequency 10HZ" stands for the system default work frequency is 10HZ, click on "-" and "+" to adjust. The range is :1HZ-16HZ
- (6). "Energy 50MJ" stands for the system default work frequency is 50MJ, click on "-" and "+"to adjust. The range is 50MJ-200HJ.

STIFF OR FROZEN SHOULDER, CERVICAL SPRAIN, 10 Minutes

It is consisted with relatively lower frequency. It gives beating and massage feeling overall.

LUMBAGO, ARTHRALGIA & MYALGIA, 10 Minutes

It has various frequency from 3 to 100Hz. It also gives beating, massage, pressing and rolling.

FATIGUE RECOVERY, 15 Minutes

It has less frequency variety. It gives comfortable treatment and applying an electric current to spine gives fatigue recovery.

LUMBAGO, 15Minutes

It has the most various frequency. It makes the least tolerance to electric stimulation.

It gives comfortable rolling.



Application Treatment Recommendation

Area	Energy/Frequency	Time	Mode	Interval
Back	8/5HZ	20	1	every day
Waist	12/3HZ	25	3	every day
Backbone	10/5HZ	25	3	every day
Cervical vertebra	12/2HZ	15	2	every day
Ankle	8/4HZ	20	3	every day
knee	10/2HZ	25	2	every day
Shoulder blade	12/5HZ	25	1	every day
Upper arm	10/5HZ	30	4	every day
Abdomen	8/4HZ	20	2	every day
Thigh	12/3ZH	25	3	every day

PS: This program is only for reference. Please follow the doctor's advice.

Cautions:

- 1.Despite high internal damping as a result of the weight and design of the work head, continuous vibrations may cause strain to the user's hand.
- 2.To avoid heat accumulation in the work head, it is essential to ensure that the air vents at the top and particularly on the base of the work head are not blocked by the hand holding it or anything else.
- 3.Applicator head are expendable parts and must be replaced after a certain period functionality

Contraindications

- 1.Application to certain tissues: The eyes and the surrounding area, the myocardium, the spinal cord, the gonads, the kidneys and the liver.
- 2.Blood disorders, coagulation problems or the use of anticoagulants.
- 3.Polypus in the area of treatment.
- 4.Thrombosis.
- 5.Tumor diseases.
- 6.Polyneuropathy.
- 7.Growing cartilage in children.
- 8.Therapy using corticoids.
- 9.Inapplicable on areas in proximity to large nerve bundles, bundles, blood vessels, the spinal cord and the head.

Possible Side Effects

1. Erythema or swelling can temporarily occur in the treated area.
2. Loss of bodily sensation or itching can temporarily occur in the treated area.
3. Skin damage after previous corticoid therapy.
4. Shockwave application can cause undesirable heart activity.

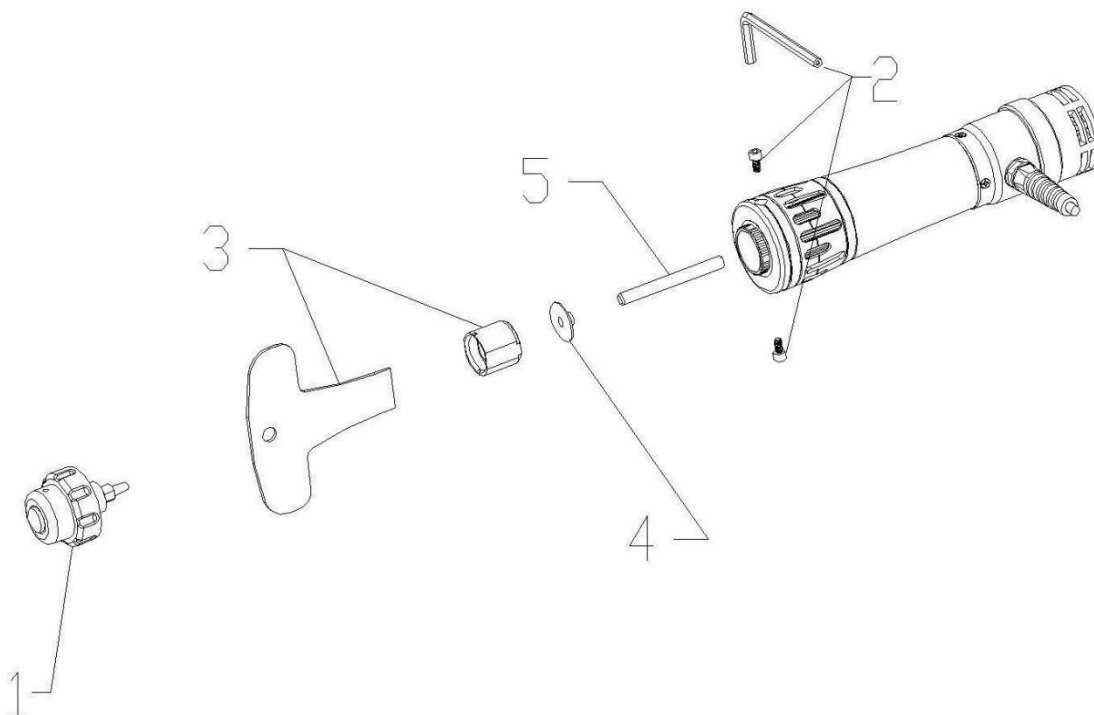
Technical Parameters

Input voltage: AC220V□ / 50HZ□ AC 110V□/60HZ□

Output Power: 230V Power consumption 150w

Max electric 100v Max shock wave 200mj

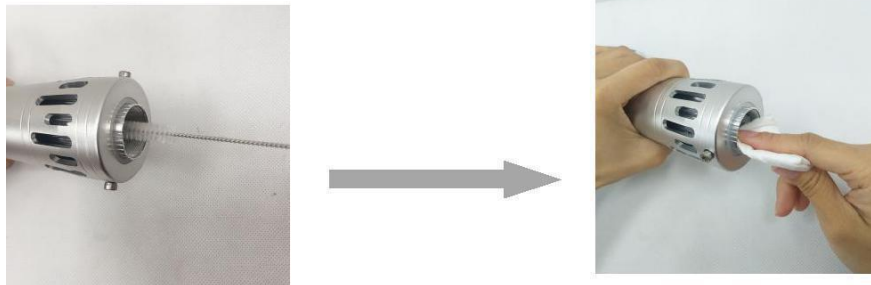
How to change the bullet and Clean the handle



1. Open the handle step: As the picture shows.

- (1) Unscrew the transmitter
- (2) Loosen the screw with a screwdriver
- (3) Unscrew the threaded braces with a wrench

- (4) Remove the gasket and bullet
- 2.Change the bullet
- (1) Clean the handle
- (2) Clean the tube with the brush
- (3) Clean in front of the handle with the soft cloth



System prompt error

- 1.ERROR:100—Connection failure between display control board and function control board!

We will show video to guide you how to solve it.



- 2.ERROR:101—Error for Interpower

We will show video to guide you how to solve it.



- 3.ERROR:102—Handle temperature is too high, please stop using.

The handle may be broken or work for a long time. Check if the fans work normally. If don't, let the handle stop working for half hour.

